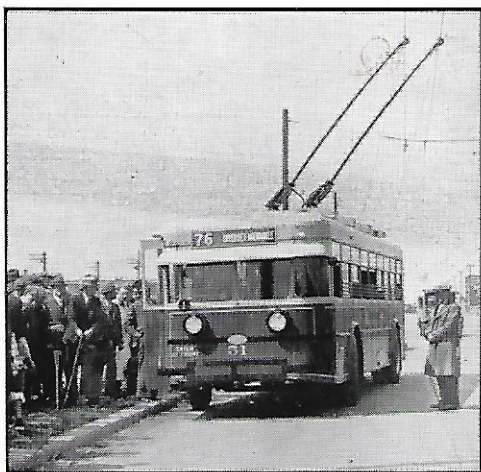
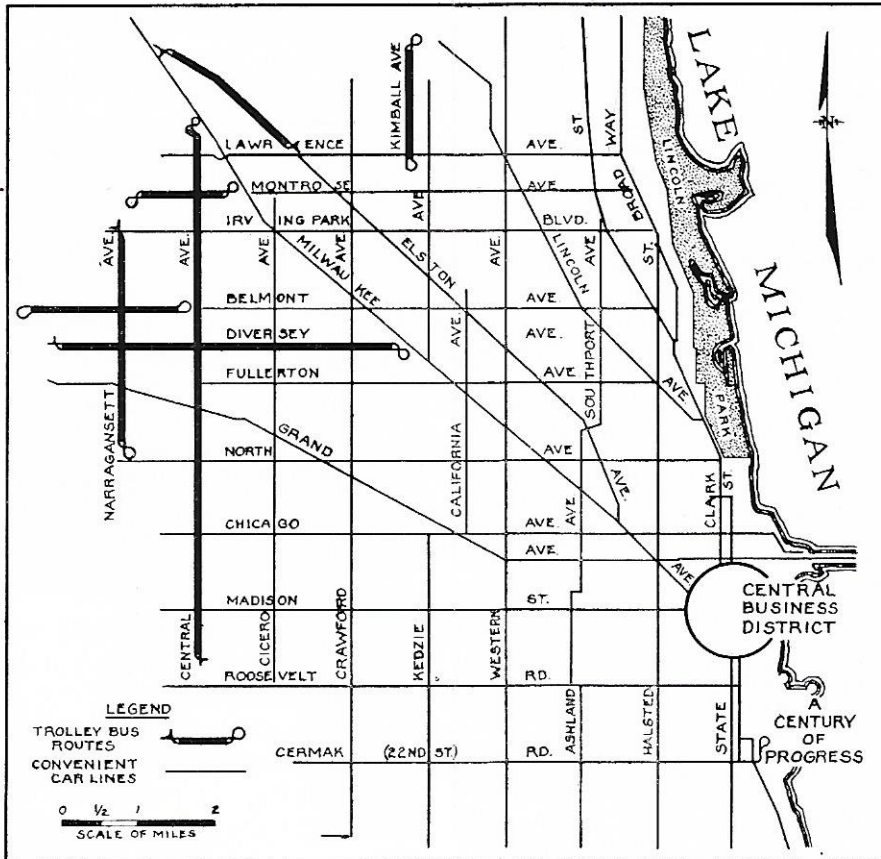


## A Trolley Bus Exhibit That is More Than a Working Model



**A**LL Operators and Managers of Electric Railway and Power Properties who visit "A Century of Progress" in Chicago this summer will see the exhibits in the Transportation Building. However, the World's Fair City offers another attraction to such men, in the extensive trolley bus system operated by the Chicago Surface Lines.

# CHICAGO SURFACE LINES TROLLEY BUS SYSTEM AND CONNECTING STREET CAR LINES



Map by Courtesy of the Chicago Surface Lines.

Additional copies of this folder may be had without obligation from The Ohio Brass Co., Mansfield, Ohio

**W**HILE the Chicago trolley bus installation may serve as a model for many to follow, it is more than a scientist's dream. It is the largest system of its kind in the world, comprising nearly fifty revenue miles of line served by 114 trolley buses. Although it was initiated only a little more than three years ago, for the past two years it has been carrying passengers at the rate of over 13,000,000 per year.

Anyone interested in this modern and popular vehicle for public transportation will want to see it in actual operation during his visit to the World's Fair. The map on the two previous pages shows the most convenient street car lines between "A Century of Progress" or the central business district and the section of the city served by trolley buses. Transfers issued on connecting lines are accepted on the trolley buses.

