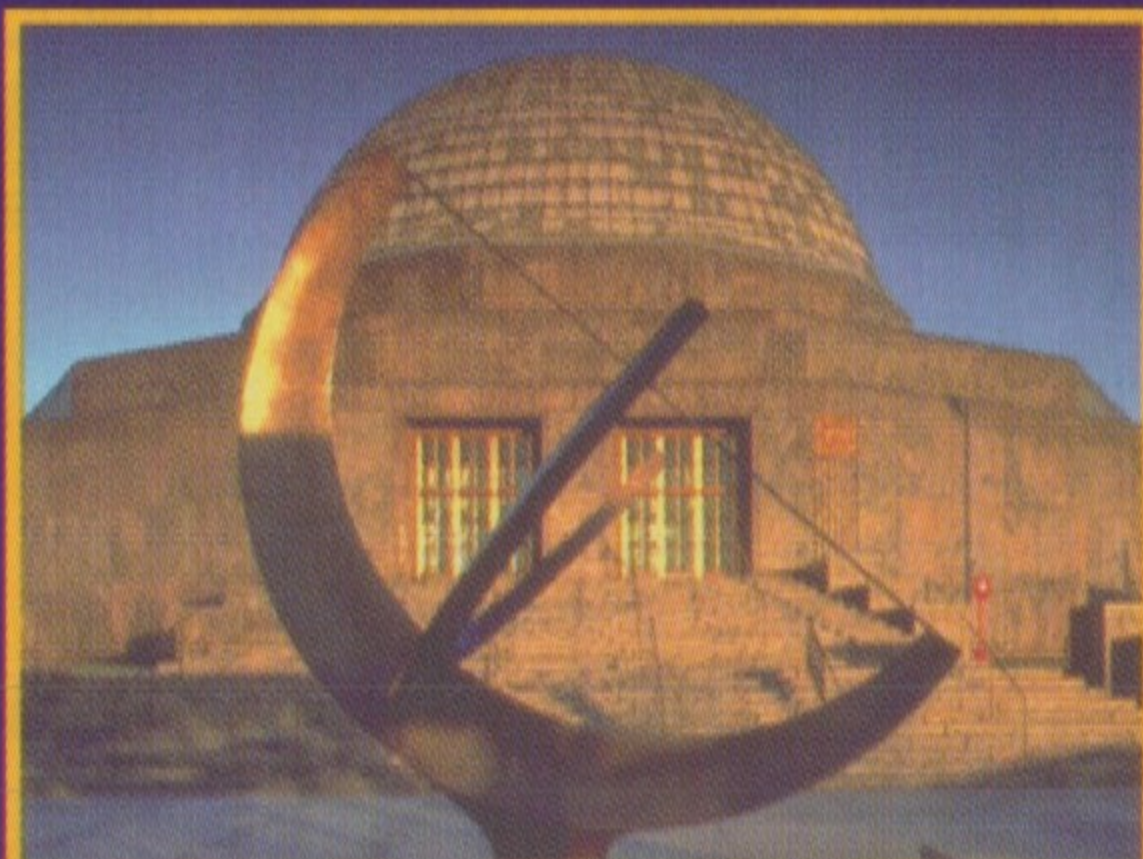
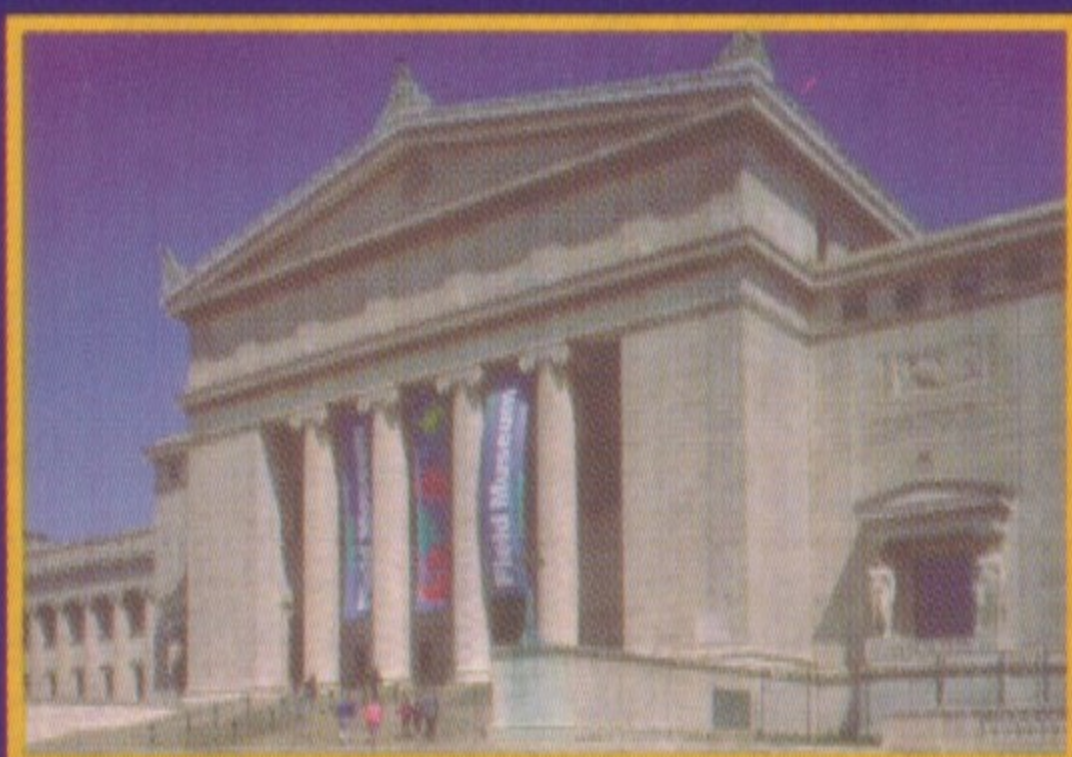


# **T** DOWNTOWN **ransit** SIGHTSEEING GUIDE



**Ride CTA buses 12, 130 or 146  
to the Museum Campus.**

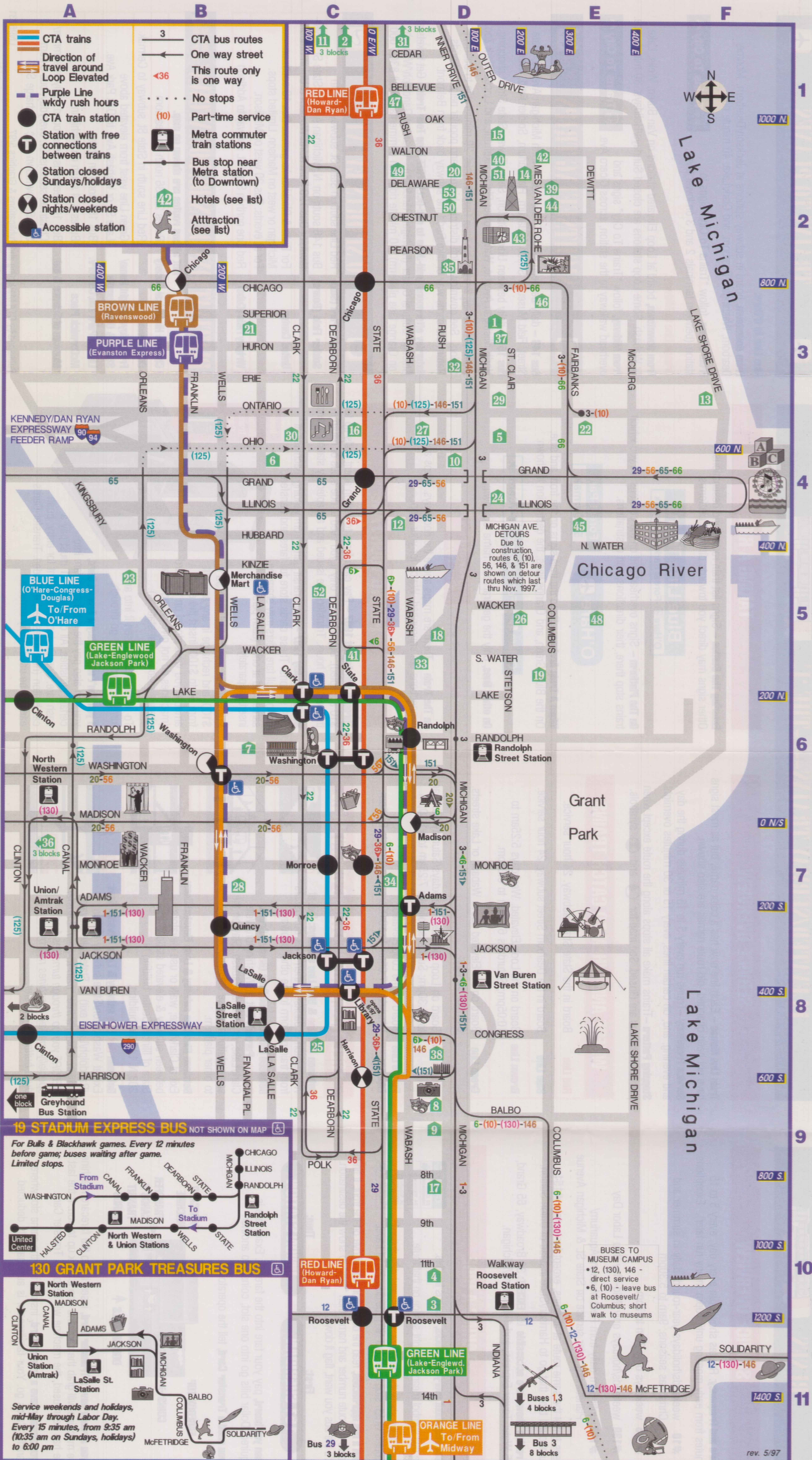
**MAY, 1997**



## DOWNTOWN ATTRACTIONS

Visitor Information Centers are in the Cultural Center (Michigan/Randolph), the Historic Water Tower (Michigan/Chicago), and Navy Pier. Open daily. Special Event Hot Line: (312) 744-3370

<b>F-11</b> Adler Planetarium	<b>F-4</b> Chicago Children's Museum	<b>E-7</b> Grant Park Concerts	<b>E-2</b> Museum of Contemporary Art	<b>C-4</b> River North Restaurants & Nightlife	<b>C-6 C-7</b> State Street Shopping
<b>C-11</b> American Police Museum	<b>D-6</b> Chicago Cultural Center/Visitor Info Center	<b>D-2</b> John Hancock Observatory	<b>D-9</b> Museum of Contemporary Photography	<b>B-7</b> Sears Tower Skydeck	<b>E-8</b> Taste of Chicago (late June - early July)
<b>D-7</b> Art Institute of Chicago	<b>A-7</b> Chicago Mercantile Exchange Tours	<b>C-8</b> Harold Washington Library	<b>F-4</b> Navy Pier/Skyline Stage/Visitor Info Center	<b>F-10</b> Shedd Aquarium	<b>D-7</b> Symphony Center
<b>E-8</b> Buckingham Fountain	<b>C-6</b> City Hall, County Bldg.	<b>D-6</b> Loop Tour Train	<b>D-2</b> North Michigan Avenue Shopping	<b>Sightseeing Boats</b>	<b>Theatres (Live):</b>
<b>F-4</b> Chicago Academy of Sciences	<b>A-6</b> Civic Opera House	<b>E-11</b> McCormick Place	<b>F-4</b> North Pier Shopping/Entertainment	<b>D-8</b> Spertus Museum of Judaism	<b>D-8</b> Auditorium
<b>D-7</b> Chicago Architecture Foundation Tours	<b>C-6</b> Daley Center & Picasso	<b>B-5</b> Merchandise Mart	<b>E-1</b> Oak Street Beach	<b>C-6</b> State of Illinois Center	<b>C-6</b> Chicago Goodman
<b>D-6</b> Chicago Athenaeum Museum of Architecture and Design	<b>E-11</b> Field Museum of Natural History	<b>D-6</b> Museum of Broadcast Communications	<b>D-2</b> Old Water Tower/Visitor Info Center	<b>F-11</b> Soldier Field	<b>D-9</b> Reskin Shubert
	<b>A-8</b> Greektown				<b>F-11</b> Vietnam Veterans Art Museum



## ALPHABETICAL LIST OF DOWNTOWN HOTELS

- |   |   |   |
|---|---|---|
| <b>1</b> Allerton Hotel, D-3                              | <b>19</b> Fairmont Hotel - At Grant Park, E-6         | <b>37</b> Radisson Hotel and Suites Chicago, D-3            |
| <b>2</b> Ambassador West Hotel, C-1                       | <b>20</b> Four Seasons Hotel Chicago, D-2             | <b>38</b> Ramada Congress Hotel, D-8                        |
| <b>3</b> Avenue Hotel, D-10                               | <b>21</b> Ho Jo Inn, B-3                              | <b>39</b> The Raphael Hotel, D-2                            |
| <b>4</b> Best Western Grant Park Hotel, D-10              | <b>22</b> Holiday Inn Chicago City Centre, E-4        | <b>40</b> Regal Knickerbocker Chicago Hotel, D-2            |
| <b>5</b> Best Western Inn Of Chicago, D-4                 | <b>23</b> Holiday Inn - Mart Plaza, A-5               | <b>41</b> Renaissance Chicago Hotel, C-5                    |
| <b>6</b> Best Western River North Hotel, C-4              | <b>24</b> Hotel Inter-Continental Chicago, D-4        | <b>42</b> Residence Inn By Marriott - Chicago Downtown, E-2 |
| <b>7</b> Bismarck Hotel, B-6 (reopens 9/97 with new name) | <b>25</b> Hyatt on Printers Row, C-8                  | <b>43</b> The Ritz-Carlton - Chicago, E-2                   |
| <b>8</b> The Blackstone Hotel, D-9                        | <b>26</b> Hyatt Regency Chicago, D-5                  | <b>44</b> The Seneca Hotel, E-2                             |
| <b>9</b> Chicago Hilton and Towers, D-9                   | <b>27</b> Lenox Suites Hotel, D-4                     | <b>45</b> Sheraton Chicago Hotel and Towers, E-4            |
| <b>10</b> Chicago Marriott Downtown Hotel, D-4            | <b>28</b> Midland Hotel, B-7                          | <b>46</b> Summerfield Suites Hotel Chicago - Downtown, E-3  |
| <b>11</b> The Claridge Hotel, C-1                         | <b>29</b> Motel 6, D-3                                | <b>47</b> The Sutton Place Hotel, D-1                       |
| <b>12</b> Courtyard by Marriott / Chicago Downtown, D-4   | <b>30</b> Ohio House Motel, C-4                       | <b>48</b> Swissotel Chicago, E-5                            |
| <b>13</b> Days Inn Chicago - Lake Shore Drive, F-3        | <b>31</b> Omni Ambassador East, D-1                   | <b>49</b> The Talbott Hotel, D-2                            |
| <b>14</b> Doubletree Guest Suites - Chicago, E-2          | <b>32</b> Omni Chicago Hotel, D-3                     | <b>50</b> The Tremont Hotel, D-2                            |
| <b>15</b> The Drake Hotel, D-1                            | <b>33</b> Oxford House Hotel, D-5                     | <b>51</b> The Westin Michigan Avenue, D-2                   |
| <b>16</b> Embassy Suites Hotel Chicago, C-4               | <b>34</b> Palmer House Hilton, D-7                    | <b>52</b> The Westin River North, C-5                       |
| <b>17</b> Essex Inn, D-9                                  | <b>35</b> Park Hyatt Chicago, D-2 (reopens late 1999) | <b>53</b> Whitehall Hotel, D-2                              |
| <b>18</b> Executive Plaza, D-5                            | <b>36</b> Quality Inn Chicago, A-7                    |   |



# INTRODUCTION

This guide shows sightseers how to use Chicago Transit Authority buses and elevated/subway trains to get around downtown, North Michigan Avenue, to the Airports, and other destinations.

It is available at hotels, Visitor Centers, O'Hare & Midway airports, Metra commuter train downtown terminals, CTA train stations, or by calling the transit information number below.

This side gives instructions on using the system. The map shows attractions, hotels, Metra terminals, CTA rail lines, and just the main bus routes sightseers are most likely to use.

**Transit Information:** 836-7000 from city/suburban area codes (312, etc.). Open daily, 5am to 1am. Maps/brochures are mailed.

**Group Trip Planning:** CTA Marketing, (312) 664-7200 x3375. Weekdays 8am to 4:30pm. Fax: (312) 664-8936.

**Customer Service:** 1-888-YOUR-CTA weekdays 7am to 8pm, or leave a voice mail at other times.

<b>CTA FARES</b>	<b>12/31/95</b>	<b>FULL</b>	<b>REDUCED <sup>(1)</sup></b>
<b>Cash Fares</b>		\$1.50	\$ .75
<b>Transfer Cards <sup>(2)</sup></b>		\$ .30	\$ .15
<b>Transit Card <sup>(3)</sup></b>	Starts July 1997; see information below.		

**(1) REDUCED FARES** are for children ages 7 through 11.

Seniors 65 years and older and riders with disabilities must obtain a Chicago-area "RTA Reduced Fare Permit" to qualify for reduced fares. This process takes 3 to 4 weeks. Call 836-7000.

**(2) TRANSFER CARDS.** When you pay a cash fare, you can also buy a Transfer Card that allows two more rides within two hours on any route. Make a quick round-trip or stopover without paying two fares!

Transfer Cards are not needed between trains (free connections available).



**(3) TRANSIT CARD.** This convenient, rechargeable plastic card stores cash value for CTA rides, then deducts exact full fares/transfers as shown below:

One Ride .....	\$1.50
1st transfer within 2 hours .....	30¢
2nd transfer within 2 hours .....	FREE



Get bonus savings with a minimum \$13.50 purchase or recharge. This is your best value – for every \$13.50 inserted, you get another \$1.50 in value.

Buy them for \$13.50 or \$16.50 at currency exchanges and Jewel or Dominick's food stores in Chicago and nearby suburbs.

Starting July 1997, also buy them from vending machines at CTA rail stations. Purchase in any amount from \$3 to \$100 and recharge in any amount from 5 ¢ to \$100.

Card can be shared by up to 7 full fare riders at once.



# BUSES



## SERVICE OVERVIEW

**Hours and Frequency:** Routes shown run every day, every 5 to 15 minutes from early morning until 10pm (many run later). Exceptions:

- #10** weekends/holidays year-round; daily in summer and Christmas seasons, 9am to 5:30pm
- #125** weekdays only 7am to 7pm
- #130** weekends/holidays only, Mid-May thru Labor Day
- #146** until 8pm daily from Field Museum/Aquarium/Planetarium; later service on State St. & Michigan Avenue

Buses travel the same route at all times, except for certain #151 southbound trips that go to Harrison/State instead of Union Station.

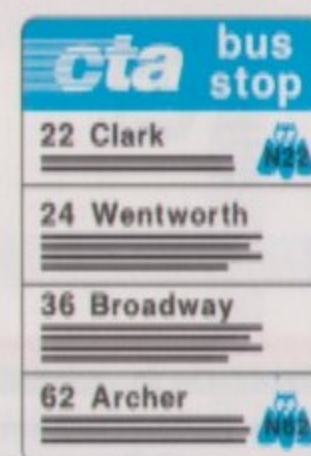
**All routes shown are accessible**  **EXCEPT:** 36 Broadway, 65 Grand, 125 Water Tower Express, and 146 Marine/Michigan.

## TAKING A RIDE

**Buses stop about every two blocks,** at signs like this:

The owl symbol means all-night service on that route.

These signs show the numbers, names, and descriptions of routes which stop there, but NOT the direction of travel.



**When a bus approaches,** read the destination sign above on the front. It first shows the route number and name, then “flips” to show the destination. If it’s the bus you want, flag it down.

**First:**

**151 SHERIDAN**

**Then:**

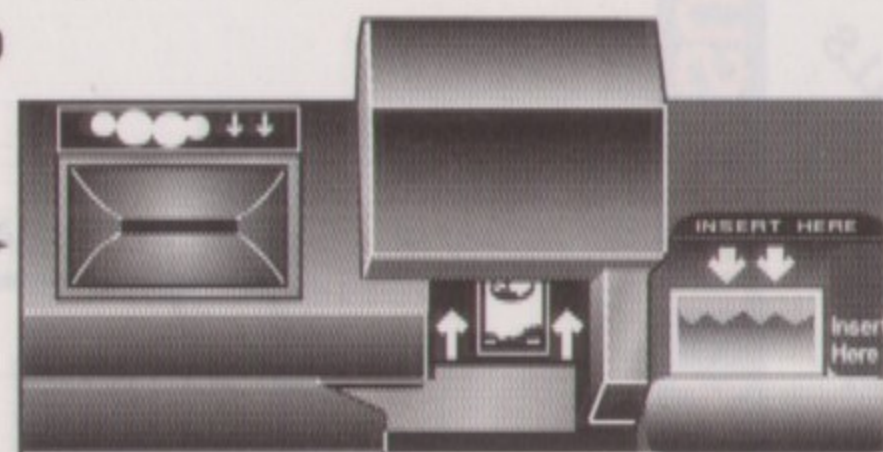
**UNION STATION**

**When you board,** pay your fare into the farebox. Exact fare is required. Dollar bills go into one slot, coins into another.

**If you need a Transfer Card,** tell the operator.

**FAREBOX TOP**

**COINS** →



**DOLLAR BILLS** ↑

**FARECARD MACHINE**

← **TRANSFER CARDS & TRANSIT CARDS**

**If you already have a Transfer Card,** insert it into the farecard machine. The machine will grab the card and pop it back up to you. If the last ride has been used, the machine will keep the Transfer Card.

**If you already have a Transit Card,** insert it into the same slot where Transfer Cards go. Your fare/transfer is automatically deducted.



# ELEVATED/SUBWAY TRAINS----THE 'L'



## SERVICE OVERVIEW

**Train Line Names** – Each line now has a color name, but as most signs have not been changed, old route names are also shown.

**Service Frequency** –Trains run every 5 to 15 minutes during the day and evening, and, on certain lines, every 15 or 30 minutes overnight.

**Stopping Pattern** –Trains make all stops along the route except when part-time stations are closed. See map for and symbols.

## WHERE AND WHEN TO CATCH TRAINS

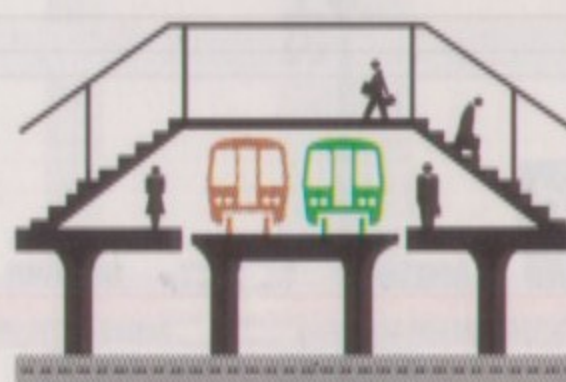
<b>Red Line</b>	Board in the State Street subway. 24 hour service.
<b>Blue Line</b>	Board in the Dearborn Street subway. 24 hour service.
<b>Brown Line</b>	Board on the Loop Elevated. Weekdays 5:25am to 10:05pm; Saturdays 6:15am to 8:05pm.
<b>Green Line</b>	Board on the Elevated above Wabash or Lake streets. 24 hour service.
<b>Orange Line</b>	Board on Loop Elevated. Weekdays/Saturdays 5:00am to 11:30pm; Sundays/holidays 7:25am to 11:30pm.
<b>Purple Line Express</b>	Board on the Loop Elevated. Weekdays 7:05am to 10:05am & 3:40pm to 6:15pm.

## FREE TRAIN CONNECTIONS DOWNTOWN

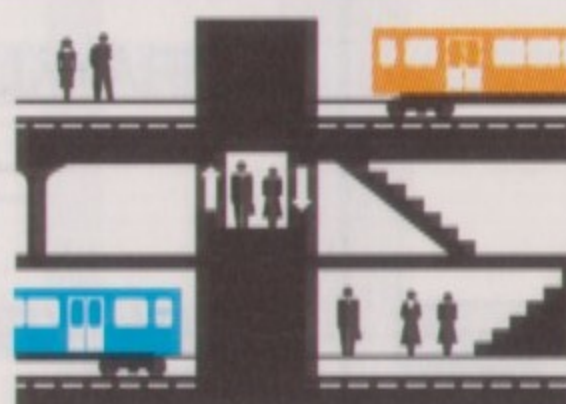
**Between Red Line & Blue Line subways:** Exit at Washington or Jackson, then walk *downstairs* from train platform to the other subway.



**Between Loop Elevated lines (Brown, Green, Orange, Purple):** Exit at Washington/Wells, Clark/Lake, or Adams/Wabash. Stay on the same platform or use overhead walkway to other platform.



**Between Blue Line subway & Loop Elevated lines:** Exit at Clark/Lake; walk or use elevators between subway & elevated stations thru State of Illinois Center building or 203 N. LaSalle building.



**Between Red Line subway & Loop Elevated lines:** Exit at Washington/State subway station (Randolph/Lake exit) or State/Lake elevated station. *Obtain a free "train-to-train" transfer BEFORE you go through turnstiles from specially-marked machines nearby; push button for transfer.*



## TAKING A RIDE

**Entering The Station** – Signs list train routes and destinations. Other signs may direct you towards different platforms.

### Blue Line Trains

O'Hare -Forest Park-54/Cermak

**On The Platform** – Signs overhead and on the columns tell you which trains stop there, their directions, and destinations.

O'Hare

Forest Park  
54/Cermak

**When A Train Arrives** – Read the train signs on the front and side. On the Blue, Green, and Orange lines, the destination is shown:

O'Hare

Forest Park

54/Cermak

**On other lines,** only the general route name is shown:

Howard  
Dan Ryan

**On The Train** – There are maps above the doorways. Stops and connections are announced. Watch for your stop.

## PAYING YOUR FARE

**Through mid-August 1997** – Pay cash fares to station agent (bills up to \$10 accepted). Buy a transfer only if you need to ride a bus or return in the next two hours. Transfers are issued and accepted by station agents.

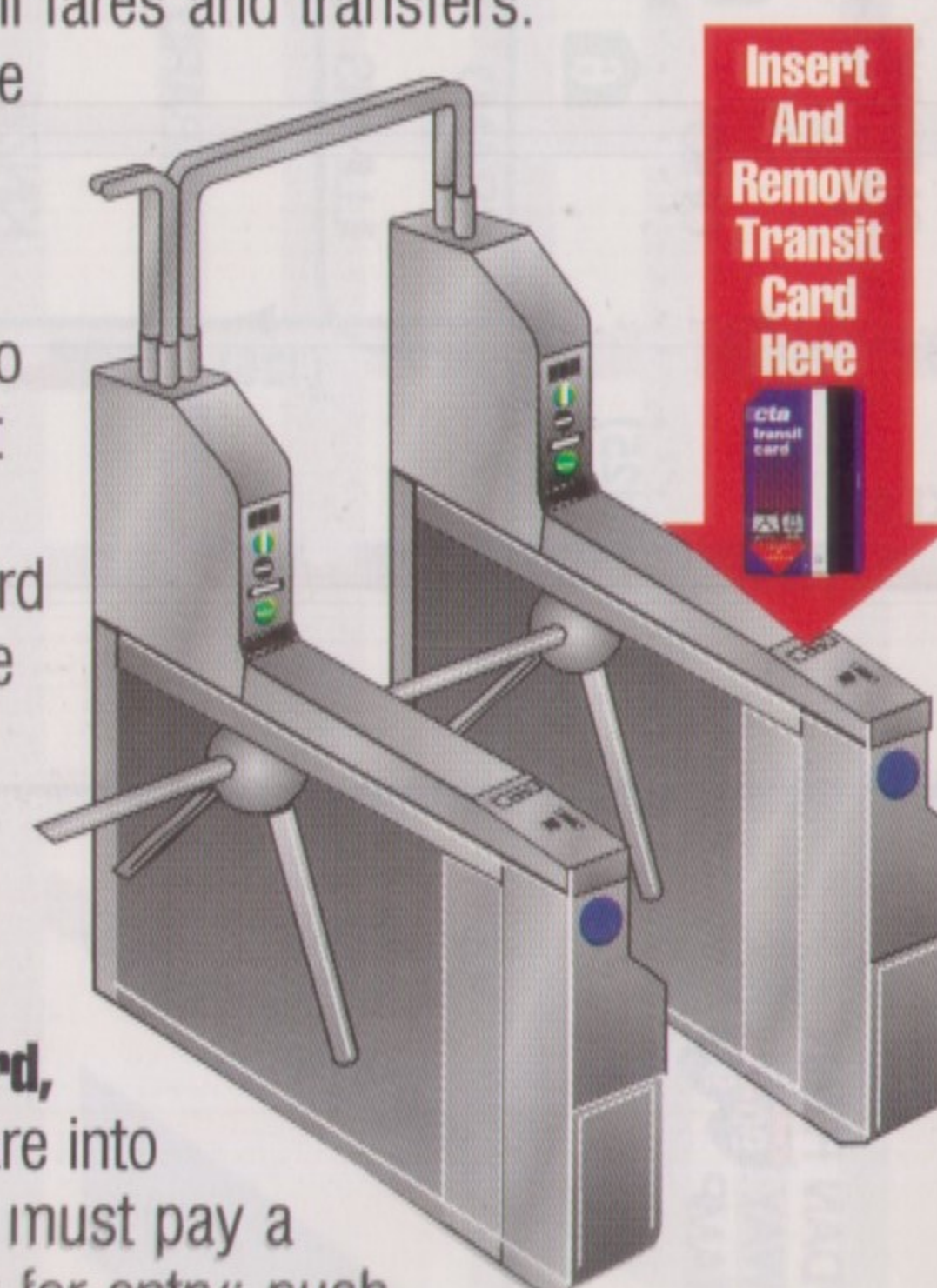
**Starting in July 1997** – Buy Transit Cards from vending machines at CTA stations. These cards store full fares and transfers.

Up to 7 full fare riders may share the same card at once (each person inserts separately).

Purchase in any amount from \$3 to \$100, and recharge in any amount from 5¢ to \$100. Insert the exact amount you want stored on the card (machines do not give change; use change machines at stations).

To use the card, insert it into any turnstile; remove it; go through.

**If you don't wish to buy a Transit Card,** you can also pay the exact cash fare into certain turnstiles. All children 7-11 must pay a cash fare. See Customer Assistant for entry; push call button (near turnstiles) if needed. Transfer Cards can still be used in any turnstile.







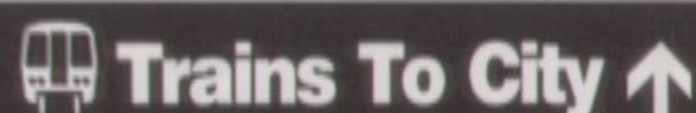
# TRAINS TO PLANES



## Blue Line to O'Hare:

**From downtown,** board in subway stations at Jackson/Dearborn, Monroe/Dearborn, Washington/Dearborn, and Clark/Lake. 40 minute ride.

**From O'Hare,** follow "Trains To City" signs to station (between terminals 2 and 3 on lower level).



## Orange Line to Midway:

**From downtown,** board at Loop Elevated stations on Van Buren, Wells, Lake, or Wabash. Some Loop stations are closed Sundays/Holidays. 30 minute ride.

**From Midway,** follow "Trains To City" signs and overhead walkway to the station, across Cicero Ave.



# SIGHTSEEING TRIPS



**Bus 146** – daily between Water Tower Place, North Michigan Avenue, State Street, Field Museum, Shedd Aquarium, Planetarium, Soldier Field, lakefront.

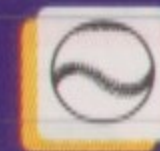
**Bus 151** – daily between Union Station, Sears Tower, State Street shopping, North Michigan Avenue, Water Tower Place, lakefront, and Lincoln Park Zoo.

**Monday-Saturday: Brown Line from Loop Elevated;** 20 minute ride to Belmont station. See downtown, loft districts, historic and popular neighborhoods. Return the same way or take Red Line subway back from Belmont.

**Saturday afternoons (mid-June to mid-Oct.): FREE Loop Tour Train.** Get tickets at Chicago Cultural Center (Michigan/Randolph). Board at Randolph/Wabash (on Orange Line platform). 40 minute ride with commentary. Call 836-7000.



# TO SPORTS EVENTS



<b>Comiskey Park (Sox)</b>	Red Line south in State St. subway to 35th
<b>Soldier Field (Bears)</b>	Bus 146 south on N. Michigan Ave. or State St. downtown; or Bus 128 from North Western & Union Stations
<b>United Center</b>	For Bulls & Blackhawks games: Bus 19 south on Michigan or west on Madison. Limited stops. For all events: Bus 20 west on Madison.
<b>Wrigley Field (Cubs)</b>	Red Line north in State St. subway to Addison

# DESTINATIONS OUTSIDE DOWNTOWN (FROM THE "LOOP" AREA)

**Not all bus routes are shown on map.**

<b>Chicago Historical Society</b>	Buses 22, 36 north on Dearborn
<b>Chinatown</b>	Red Line south in State St. subway to Cermak
<b>Frank Lloyd Wright Home/Studio &amp; Unity Temple</b>	Green Line west from elevated above Lake St. or Wabash Ave. to Oak Park Ave.
<b>Lincoln Park Zoo/Conserv.</b>	Bus 151 north on State
<b>McCormick Place</b>	Buses 3, 4 south on Michigan
<b>Museum of Science &amp; Ind.</b>	Bus 10 weekends year-round; daily in summer/Christmas seasons. Or, everyday, bus 6 from State St. downtown (25¢ surcharge SB).