



cta *Kedzie Garage*

First in a new generation of bus service facilities

The new \$17.6 million Kedzie Bus Garage has been called by transit experts, "the most modern, energy efficient, cost effective, state of the art bus garage/maintenance facility in the country."

The 321,000 square-foot garage is built on 8.2 acres bounded by Kedzie Avenue, Jackson boulevard, Van Buren Street, and Spaulding Avenue. The new facility replaces the old Kedzie carhouse built in 1910, and is CTA's first new bus garage in 30 years.

Garage facilities include indoor parking for 250 buses, maintenance and parts storage facilities, 5 drive-through service lanes and 3 drive-through bus washers, 14 drive-on/drive-off bus hoists, 4 vehicle maintenance pits, 2 water treatment oil/water separators to intercept drainage, complete transportation offices, and convenient passenger areas for purchase of monthly passes and tokens.

Plans for the garage were prepared by Lester B. Knight & Associates in cooperation with CTA engineers. Del E. Webb, Inc. was the general contractor. Funding was provided by the federal government and the Illinois Department of Transportation.



Sheltered storage

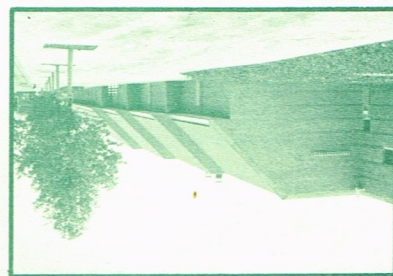
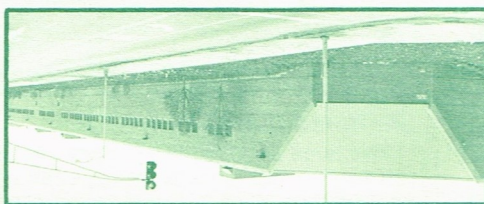
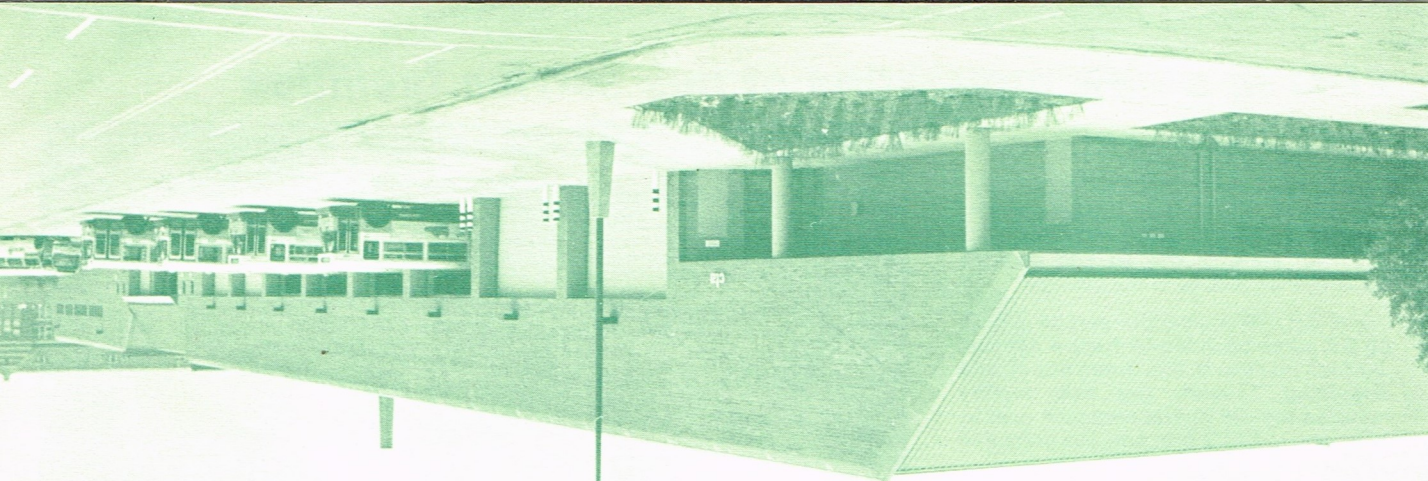
Two large parking bays provide sheltered storage for 250 buses that were formerly parked outside. During sub-zero weather, diesel engines no longer will be kept running all night to insure morning rush hour operation. Indoor parking increases service life of buses and saves energy.



Convenient service

Buses enter from Kedzie Avenue and pass through five service lanes (above). Each lane provides fuel, interior cleaning, refuse collection, and currency removal.

At the next stop (below), three automatic bus washers clean the top, front, sides, and rear of buses while spraying the chassis. Cost efficient washers achieve 65% water reclamation.



Efficient maintenance

Hoists (above) accept both standard and articulated buses for inspection and unit replacement maintenance.

Four pits (right), each 140 feet long, can service up to twelve buses simultaneously.

An overhead distribution system dispenses lubricants and fluids at each work location.

Neighboring architecture

The architecture of Kedzie Garage (front cover) reflects the surrounding residential environment and reduces building mass through the use of truncated corners, setbacks, texture variations, and landscaping.

