

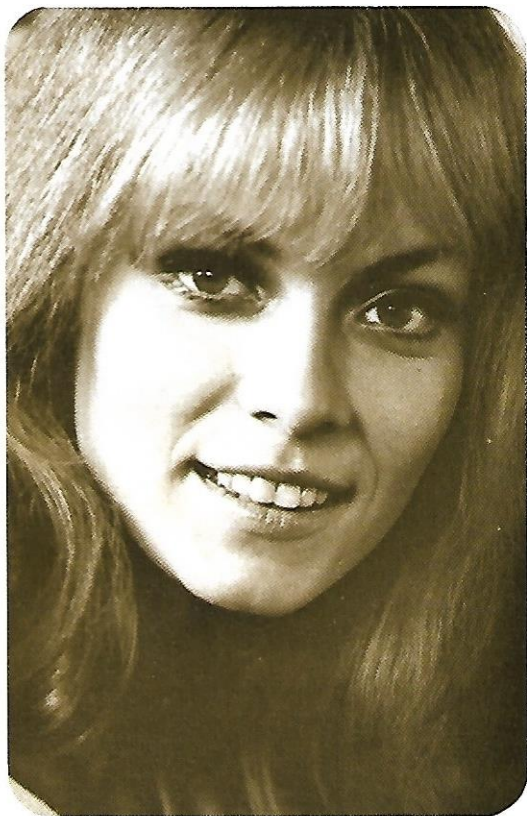


Lake  
Dan Ryan

*welcome  
aboard!*



**CHICAGO'S NEW  
TRANSIT CAR**



**Welcome aboard the Chicago Transit Authority's brand-new rapid transit cars.**

Built by The Budd Company, a leader in advanced railway passenger equipment, these cars will form yet another link in Chicago's modern rapid transit system. Whether riding these gleaming cars on the new Dan Ryan or Kennedy (Milwaukee) lines, you'll be enjoying one of the nation's most modern rapid transit cars. Of a unique design, these 150 cars are the first ones made of stainless steel for the CTA. Cars were purchased by the City of Chicago, with the cooperation of the U.S. Department of Transportation.

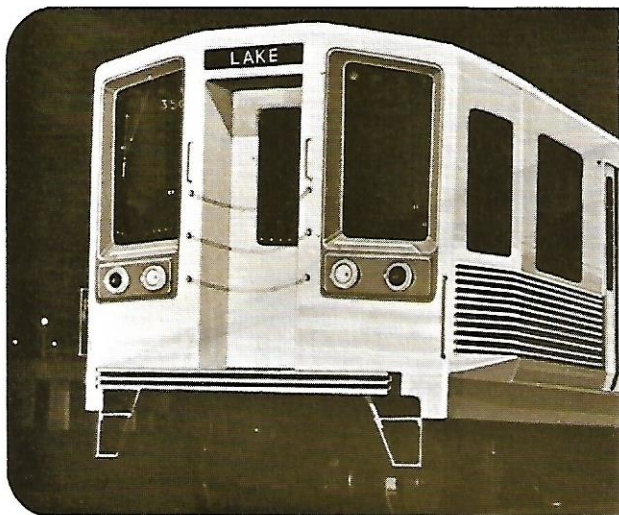
There are many passenger-pleasing features on these new Budd cars. Seats, covered in easy-to-clean vinyl, are comfortably wide and constructed of urethane foam and steel springs. Standing passengers can use convenient handholds on seats.







The new CTA cars are designed to run in married pairs, each pair carrying 98 passengers. The improved air-conditioning system provides a gentle flow of air. Cars are well-lighted and spacious. Interiors are decorated in stainless steel and plastic materials. Windows are extremely large—picture-window size! Destination signs, too, are extra large and easily seen—inside or out. Two double doors on either side make boarding and exiting much easier.

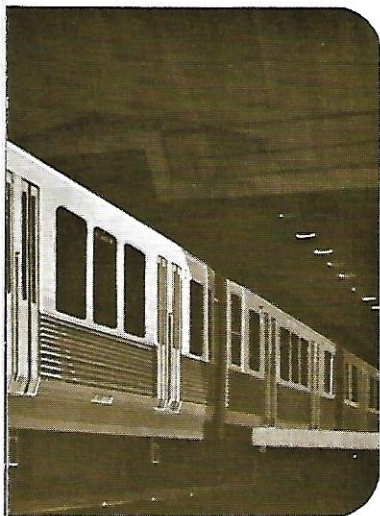






Running on Budd's specially-designed trucks, these cars will give CTA passengers the smoothest ride going. Used on many of today's most

modern transit and commuter cars, the Budd Truck is the hallmark of engineering excellence.



If It's New In  
Rail Transportation...  
It Comes From

***Budd***

... The People Movers

## CAR FACTS ON BUDD-BUILT RAPID TRANSIT CARS

Length over coupler pulling face	48'3"
Width, maximum	9'4"
Width, over thresholds	8'8"
Overall height	12'0"
Passenger capacity, seated	A-car 47, B-car 51
Seats	Transverse, vinyl upholstered
Air Comfort System:	
Ventilation	Forced air, sidewall distribution
Air conditioning	10-ton unit under-floor mounted
Heating	12 or 30 KW
Interior finish	Stainless steel, plastic materials, rubber floor covering
Body and framing	Stainless steel
Lighting	Fluorescent
Doors	Blinker-type
Traction motors	Four 100-HP per car, Type 1250 K
Current collector	Overrunning third rail
Voltage	600 D.C.
Controls	SCM
Operating cabs'	One per car
Drive	Right angle, hypoid
Brakes	Dynamic, friction track
Maximum speed	70 mph
Acceleration	3.2 mphps
Deceleration	3.2 mphps
Wheels	Aluminum-centered, steel tread
Wheel base	6'3"
Wheel diameter and contour	28" cylindrical
Truck center distance	33'8"
Suspension	Steel coil and rubber
Approximate weight (Married pair—without load)	89,000 lbs.

## COMPONENT SUPPLIERS

ITEM	MANUFACTURER
Trucks	Budd
Wheels	Kaiser Aluminum
Axles	Timken
Journal Bearings	SKF
Truck Springs	Crucible Steel
Track Brakes	General Electric
Brakes-Rotor	A.S.F.
Brake Actuator	WABCO
Lateral Shocks	Monroe
Vertical Shocks	Monroe
Propulsion Equipment	General Electric
Drawbar & Coupler Equipment	Ohio Brass
Electric Sanding Device	Midland-Ross
Batteries	Exide
Horn	Federal Sign & Signal
Sash-Drop	Adams & Westlake
Destination & Run Number Signs	Teleweld
Doors	O.M. Edwards
Seats	Fixible
Motorman's Seat	Budd and Fixible
ATC Cab Signal	WABCO—General Railway
Stanchions	Fixible
Marker Lights	Adams & Westlake
Light Fixtures	Luminator
Signal Lights	Adams & Westlake
Headlight/Taillight	Trans-Lite
Train Telephone	Femco
Heating, Ventilation & Air Conditioning Equipment	Safety Electrical Equipment
Air Filters	Farr
Temperature Controls	Vapor Corp.
Electric Windshield Wipers	American-Bosch Arma.
Floor Covering	RCA Rubber
Fire Extinguisher	Ansul, Miller-Peerless
Door Hardware	Adams & Westlake
Side Door & Signal Equipment	Vapor
End Door Closures	LCN Closer
Interior Lining (Sides & Ceiling)	U.S. Plywood
Window Masks	Speck Plastics
Insulation	National Gypsum
Moldings (Interior)	Pyramid
Glass	Libby-Owens-Ford

**COOPERATING  
FOR BETTER  
TRANSPORTATION**



**City of Chicago**

**Richard J. Daley**

**Mayor**

**Milton Pikarsky**

**Commissioner of Public Works**



**Chicago Transit Authority**

**George L. DeMent**

**Chairman, Transit Board**

**Thomas B. O'Connor**

**General Manager**



**U.S. Department of Transportation**

**John A. Volpe**

**Secretary**

**Carlos C. Villarreal**

**Urban Mass Transportation Administrator**