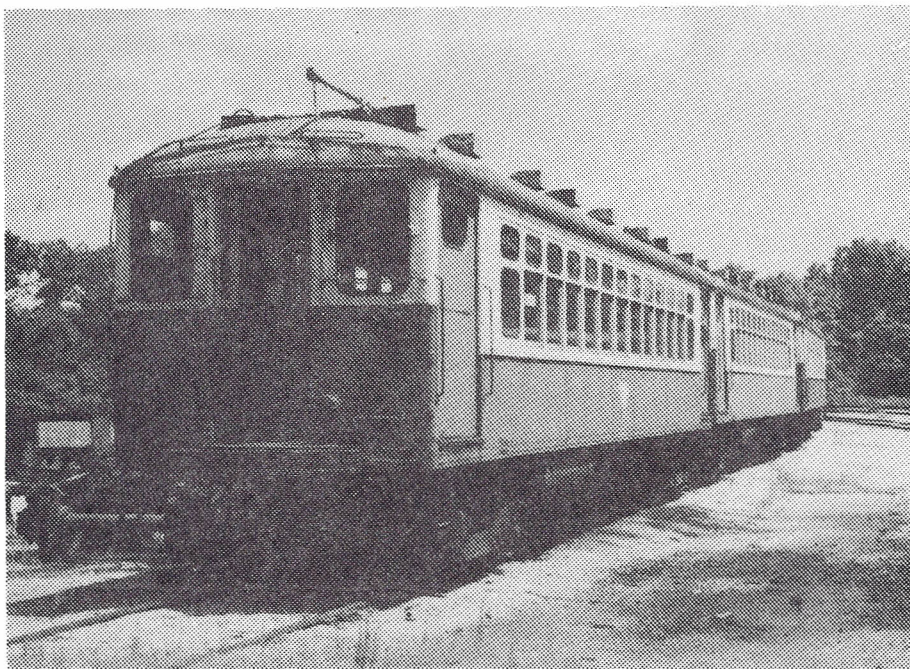


THE BERRIEN COUNTY RAILWAY MUSEUM, PRESENTS  
ON SUNDAY, MAY 30, 1982

A CHICAGO TRANSIT AUTHORITY EL EXCURSION.

The main part of our excursion will feature a train of two 4000 series cars and a very Special car from the C.T.A. Historical collection, Car number 1, Built in 1892 for the Elevated Railway. This was the first car delivered.



(2 of the cars will look like this. Shown in Michigan City, Indiana in the late '70s.)

Lv. Quincy & Wells 12:00 Noon  
Ar. " " 4:45 P.M.

Movie run on the Skokie Swift. Stop at Skokie shop to change equipment.

No subway routes - No shop tours - No food on train

Tickets must be purchased before May 1, 1982 by mail from:

Berrien County Railway Museum, Inc., P.O.Box 1067,  
Benton Harbor, Mi; 49022. (Please enclose a self  
addressed stamped envelope)

FARE \$15.00 (Sorry, No refunds after May 1, 1982,  
unless trip is cancelled.)

Capacity limited to 100. All space sold on first  
come basis.