

# V



**CENTRAL ELECTRIC RAILFANS' ASSOCIATION**



**BANQUET**



**FRIDAY JANUARY 23, 1942**

**ON BOARD DINING CAR NO. 409 OF THE CHICAGO NORTH SHORE &  
MILWAUKEE R. R. AT NORTH WATER STREET STUB.  
CHICAGO**



## Menu

Tenderloin Steak  
North Shore White Flag Special

or

Broiled Lake Trout,  
DH 25 Herringbone Gears  
M-C-B



Cole Slaw  
Mechanically Interlocked

Potatoes,  
Redesigned



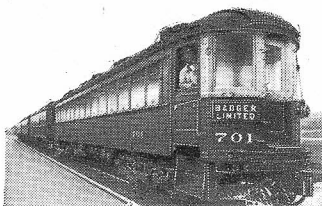
Bread,  
Battery or Line Operated  
Butter,  
Thermostatically Controlled

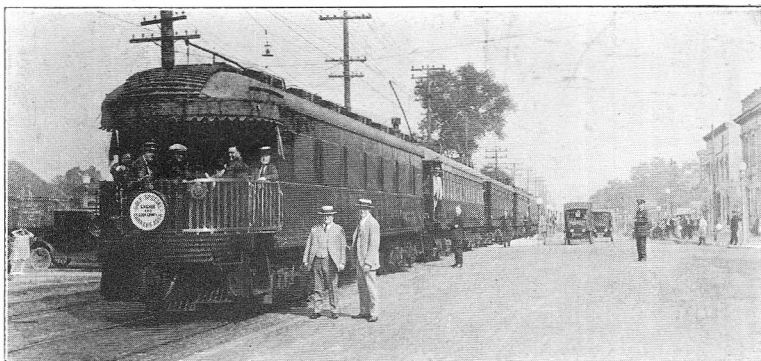


Coffee  
One Bell, (Green Flags)

Tea  
Two Bells,  
Milk  
Hell's Bells,

Apple Pie, and Cheese,  
Series or Parallel





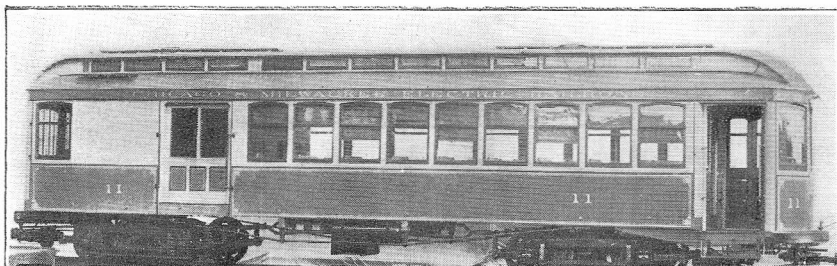
At the suggestion of some of you here tonight, the Central Electric Railfans' Association was formed in July 1938 to foster the hobby of the study of the history, equipment and operation of electric railroads.

●

As we begin our fourth year in a time of unprecedented international strife we recognize our duty even stronger than before to provide hours of interesting and pleasant diversion during trying days that may lie ahead.

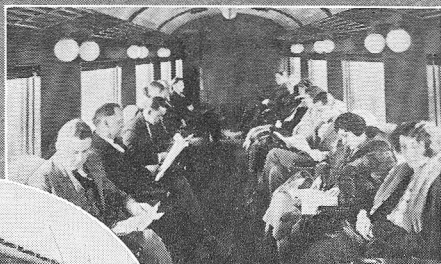
●

To all 360 members, we send this menu, that you may take part in a measure in this gala occasion.

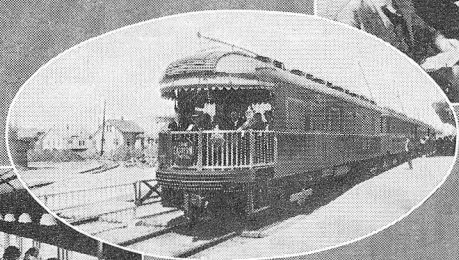




THROUGH TICKETS  
*To All Points*



**NORTH SHORE**  
LINE



**NORTH SHORE**  
LINE



BAGGAGE CHECKED  
*To All Points*



(All engravings used herein are  
at least 15 years of age, and  
of course, do not represent the  
current modern practices of the  
North Shore Line.)

