

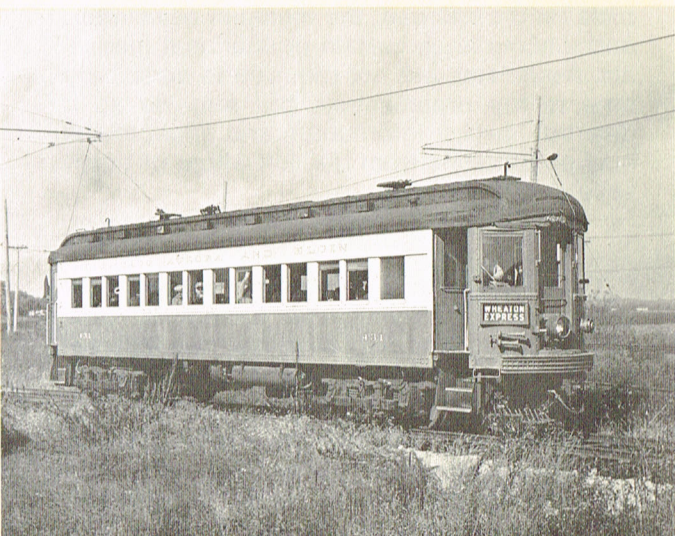


FREE PARKING
FREE ADMISSION

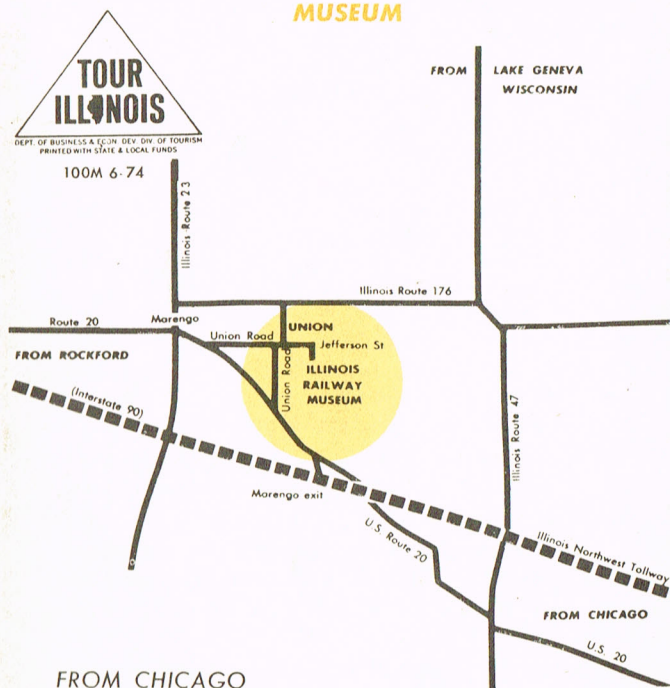
FARES ON TRAINS

ADULTS \$1.00 2 RIDES \$1.50

CHILDREN 50¢ 2 RIDES 75¢



HOW TO GET TO THE ILLINOIS RAILWAY MUSEUM



FROM CHICAGO

Take the Illinois Northwest Tollway (Interstate 90) to U.S. Rte. 20 Marengo exit. Drive Northwesterly on 20, about 4½ miles, to Union Road. Take Union Road north and east 1 mile through town (on Jefferson St.) to Olson Road (end of Jefferson Street). Turn south to Museum.

FROM MILWAUKEE AND EASTERN WISCONSIN

Take any road to Illinois Route 176. Follow west, 5½ miles west of Illinois Route 47 to Union Road. Turn south to Jefferson Street, Union (first street south of railroad). Take Jefferson Street east ¾ mile to Olson Road (end of Jefferson Street). Turn south to museum.

FROM ROCKFORD AND WESTERN WISCONSIN

Take U.S. Route 20 (or Interstate 90 and exit at Route 20 at Cherry Valley-Belvidere) through Marengo. About 1 mile east of Marengo, turn left on Union Road. Take about 2¼ miles east through Union to Olson Road (end of Union Road-Jefferson Street). Turn south to Museum.

See the World's Largest
Railway Museum



ILLINOIS RAILWAY MUSEUM





EQUIPMENT INCLUDES

- STEAM ENGINES
- STREETCARS FROM CHICAGO & MILWAUKEE
- INTERURBAN CARS
- CHICAGO "L" CARS
- BURLINGTON ZEPHYR STREAMLINER
- STEAM PASSENGER CARS
- PRIVATE CARS
- FREIGHT CARS
- TROLLEY BUSES

Photos by Glenn Monhart and Jim Johnson

Remember the Clang, Clang of the Streetcar, the sounds of the mighty Steam Locomotive, the quiet, breezy ride through the countryside in an Electric Interurban car?

These sights and sounds have almost completely disappeared from the American scene. Almost, that is, for they still exist at the Illinois Railway Museum near Union in McHenry County.

The Museum is the world's largest operating railway museum, with 46 acres of outdoor display as a setting for over 140 Steam Engines, Streetcars, Interurban cars, Elevated railway cars, Steam Railroad cars, and Trolley Buses. We have a dozen old Chicago and Milwaukee Streetcars, Interurban trains from the North Shore Line and Chicago, Aurora and Elgin, as well as ten steam engines.

If all this equipment were coupled together in one train, it would be over a mile and a half long!

Several pieces of this equipment are operated over the Museum's demonstration railway. Our present line is 1½ miles long, with another 4 miles to be constructed in the future.

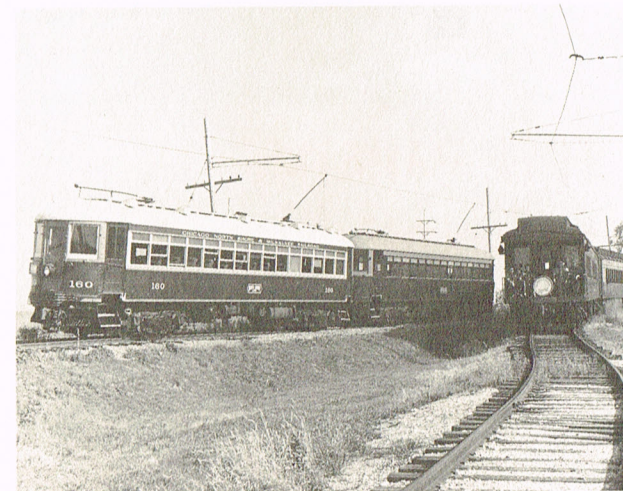
Visitors may examine the equipment on display at their leisure. Due to safety requirements, however, we do not allow individuals to climb on cars and engines. Most of our cars are not open for interior inspection, except for those in operation.

BRING YOUR CAMERA!

And bring lots of film! Our collection of equipment is extensive and varied. Our trains operate through the rural Illinois countryside.

VISIT OUR GIFT SHOP

The Museum displays and Gift Shop are located at our 1851 railway depot (the oldest railway depot west of Pittsburgh). Here you may acquire soda pop, color postcards, books, and other railroad oriented items. Or just browse.



MEMBERSHIP

Membership is open to all. Dues are \$5.00 per year for an Associate. Members receive a pass on the railroad, the museum newsletter, and discounts on certain educational materials. Associates are not required to contribute time to the organization, but may do so if desired. Further information and applications may be obtained from the Gift Shop, or ticket sellers.

A NOT-FOR-PROFIT CORPORATION

The Museum is a recognized not-for-profit corporation, located within an hour's drive from Chicago, and only 80 miles from Milwaukee. It was founded in 1953, and volunteers, serving without pay, do most of the work.

Capital improvements are made possible by donations from the public. The museum is not tax-supported, nor connected with the railroad industry. Gifts are tax-deductible.

SCHEDULE

ELECTRIC CARS

SUNDAYS: March 1 - November 30
11:00 a.m. - 6:00 p.m.

SATURDAYS: May 1 - September 30
11:00 a.m. - 6:00 p.m.

DAILY: June 15 - Labor Day
10:00 a.m. - 5:00 p.m.

Also, Memorial Day, Independence Day and Labor Day. (Sunday Schedule)

Other times by advance arrangements.

Electric Cars run half-hourly, or as required.

STEAM POWERED TRAINS

SUNDAYS: May 1 - October 15

SATURDAYS: July 1 - Labor Day

Also, Memorial Day, Independence Day and Labor Day. (Sunday Schedule)

Steam Trains run at frequent intervals between Noon and 5:00 p.m.

ILLINOIS RAILWAY MUSEUM

BOX 431

UNION, ILLINOIS 60180

815-923-2488

Notice: The Illinois Railway Museum reserves the right to substitute equipment for that advertised, or to cancel any or all operations or trains at its discretion. The Illinois Railway Museum is not a common carrier. Its rail operations are for demonstration purposes only, and the Museum reserves the right to refuse admittance to any person or persons for any reason. Not responsible for accidents.