


STANDARD OPERATING PROCEDURES TURNING ON A STEERING COLUMN GUIDE LINE

Steering column guide lines serve as a guide to Operators at locations where, because of limited space or fixed objects, turning movements are hazardous.

Contained in this leaflet are the standard operating procedures for turning on a steering column guide line under normal traffic conditions. The Operator must keep in mind that these standards do not replace the standard operating procedures for right and left turns. The guide lines only provide a guide for angling out and turning. All the other precautions and procedures contained in the standards for right and left turns must still be observed.

Operating on the guide line does not relieve the Operator of the responsibility for maintaining adequate clearance between his bus and other vehicles, objects, and pedestrians. When there are unusual conditions such as illegally parked cars or temporary obstructions these standards may not apply and the Operator must use his own best judgment.



METROPOLITAN

TRANSIT



1. PREPARE TO USE THE GUIDE LINE

Align the steering column or horn button on the guide line at the beginning of the line. If this is not possible disregard the guide line and follow Standard Operating Procedures for the turn you are making.

Wait for a gap in traffic before starting to operate on the line.

2. USE THE GUIDE LINE

Operate at 3-5 MPH. Have foot on brake pedal unless speed is less than 3 MPH.

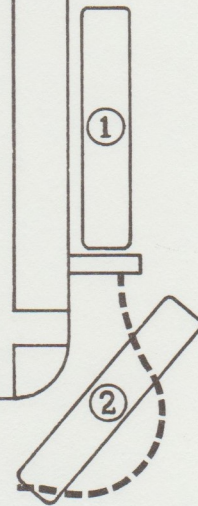
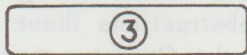
Do not deviate from the guide line to go around pedestrians or moving vehicles; stop and wait until it is clear before proceeding.

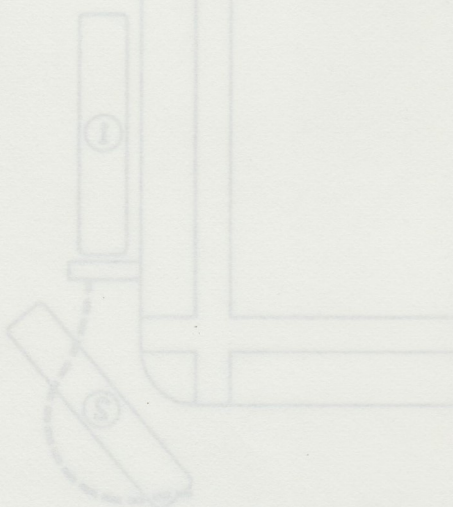
Continuously watch front overhang and use mirrors to check clearance with pedestrians, moving vehicles, and fixed objects while turning.

3. STRAIGHTEN OUT

Straighten out bus keeping 3-5 feet clearance from curb or parked vehicles.

After bus is straightened out, resume normal speed.





CHICAGO TRANSIT AUTHORITY
Personnel Development
4/74