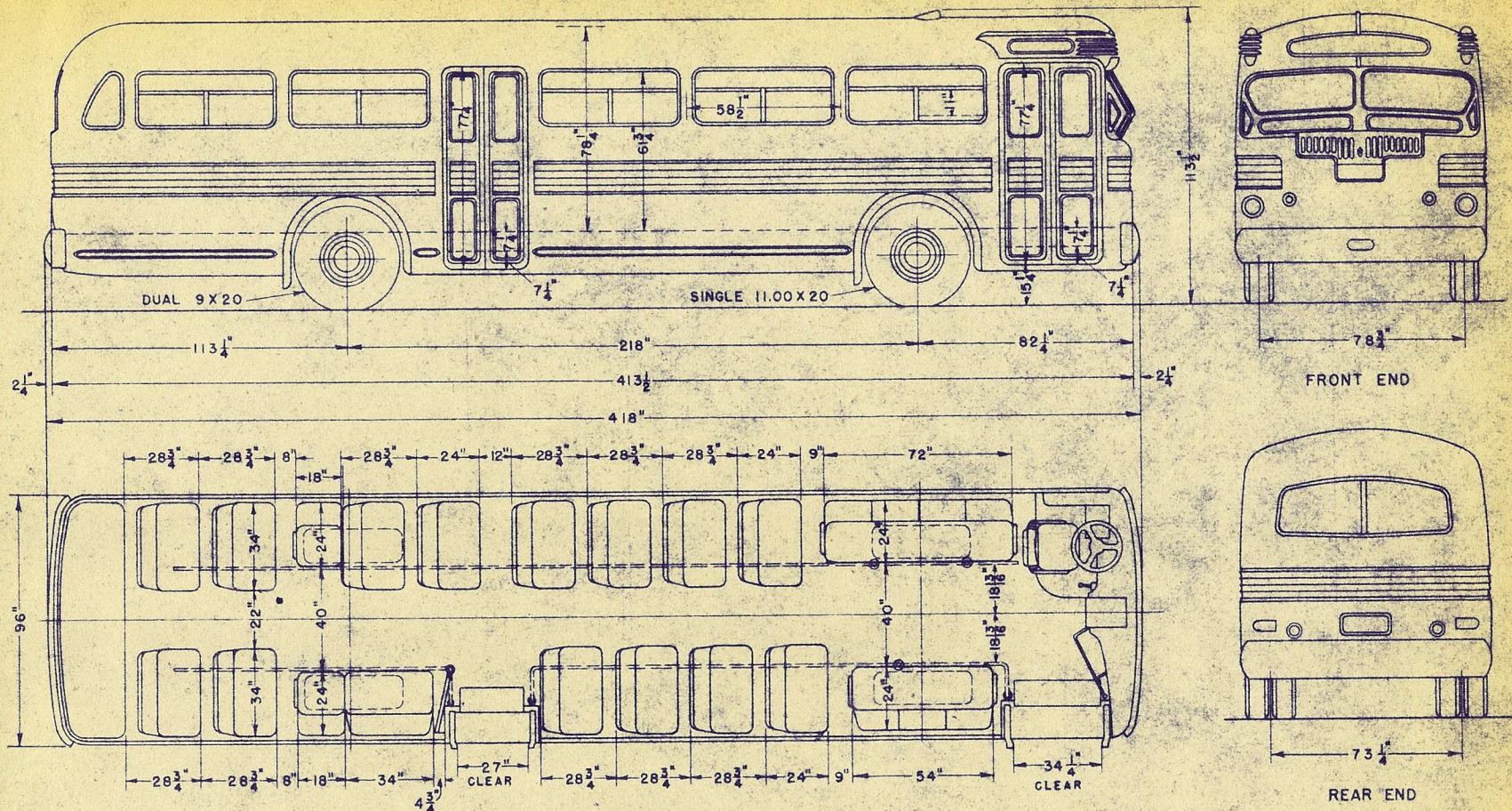


NOTE: ALL HEIGHT DIMENSIONS ARE WITHOUT LOAD



**EQUIPMENT**

NUMBER OF BUSES = 18  
 SEATING CAPACITY = 44  
 ENGINE = 6-FTC-180  
 HORSEPOWER = 180 @ 2800  
 COMPRESSOR = BENDIX WEST. - 222300  
 GENERATOR = D.R.-1117554  
 STARTER = D.R.-1109130  
 HEATERS = EVANS-206592  
 HEADLIGHTS = SEALED BEAM  
 FRONT AXLE = TIMKEN-27070WX-1  
 REAR AXLE = TIMKEN-58268-C-3  
 REAR AXLE GEAR RATIO = 6 1/2:1  
 VENTILATORS = 2-ROOF  
 DEFROSTERS = EVANS-206591  
 BATTERY = EXIDE 17 PLATE  
 HORNS = 1-DELCO-12 V.  
 TRANSMISSION = SPICER-916

BUS SERIES: 1800-1817

**WEIGHTS**

FRONT --- 7450 LBS.  
 REAR --- 9950 "  
 TOTAL --- 17400 "

**REVISION "A" 2-13-56 J.N.**  
**BUS WEIGHTS CHANGED.**

**CHICAGO SURFACE LINES**

**GENERAL PLAN & SIDE ELEVATION**

**FOR**

**TC MODEL 44-D GAS BUSES**

Dr. by <u>A.V.</u>	Tr. by _____	Approved _____ 19____
Checked by _____	Chief Draftman	Electrical Engineer
Correct <u>L.C. Anderson</u>	Engineer of Equipment	Approved _____ 19____
Approved _____ 19____	Scale _____	Chief Engineer
<u>P. Rupp</u>	Gen. Superintendent of Shops	DRG. No. 1-K-359

REVISIONS

**A**