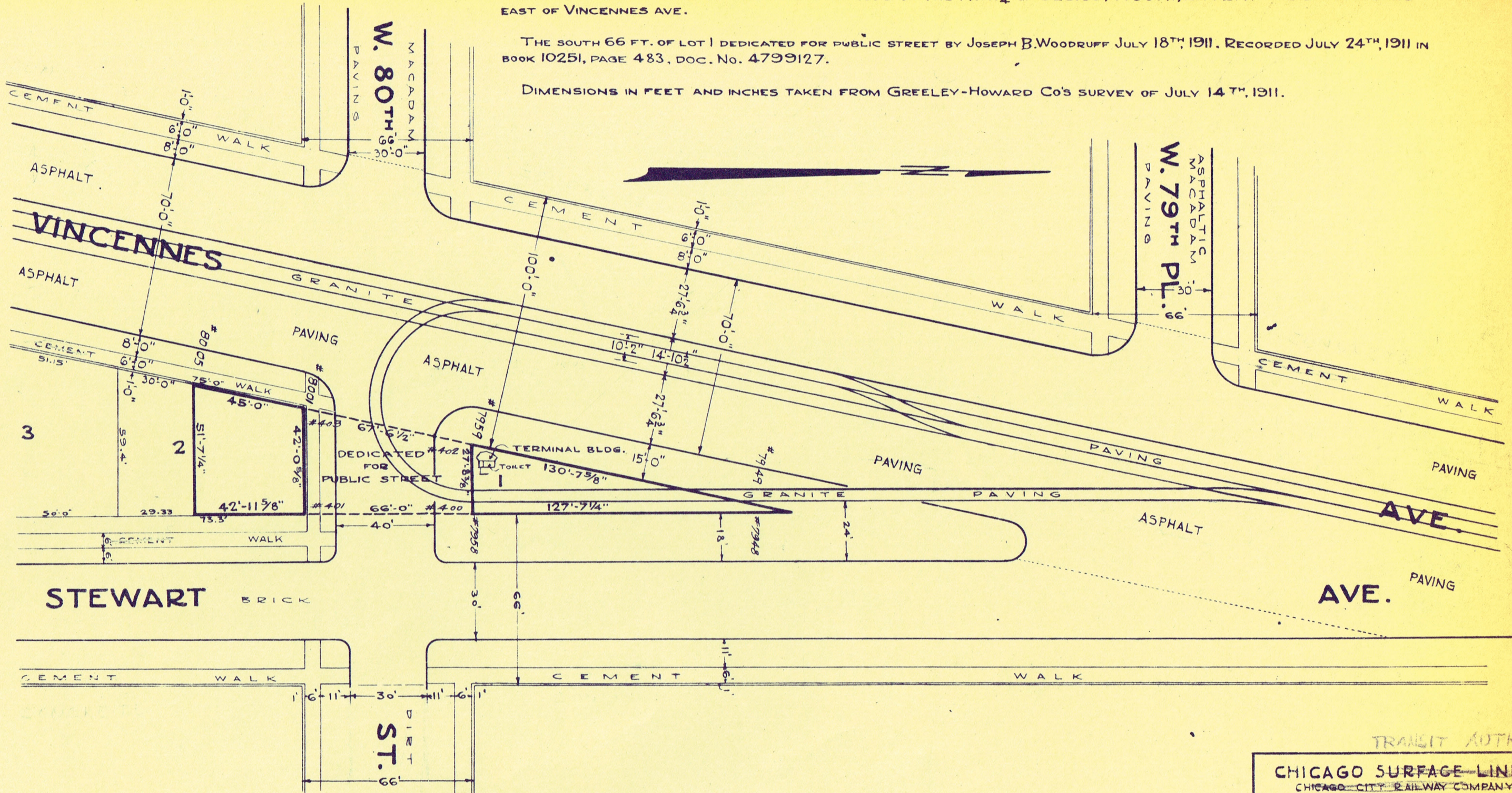


LOT 1 AND ALL OF LOT 2 EXCEPT THE SOUTH 30 FEET MEASURED ALONG VINCENNES AVE. IN BLOCK 1 IN AUGUST SCHORLING'S SUBDIVISION OF THAT PART OF THE NORTH 110 RODS OF THE N.W. 1/4 OF SEC. 33, T. 38 N., R. 14 E. OF THE 3RD P.M. LYING EAST OF VINCENNES AVE.

THE SOUTH 66 FT. OF LOT 1 DEDICATED FOR PUBLIC STREET BY JOSEPH B. WOODRUFF JULY 18TH, 1911. RECORDED JULY 24TH, 1911 IN BOOK 10251, PAGE 483, DOC. NO. 4799127.

DIMENSIONS IN FEET AND INCHES TAKEN FROM GREELEY-HOWARD CO'S SURVEY OF JULY 14TH, 1911.



VOID
SEE NEW DEG.
SAME NUMBER

TRANSIT AUTHORITY

CHICAGO SURFACE LINES CHICAGO CITY RAILWAY COMPANY	
PROPERTY AT	
VINCENNES AVE. AND 80TH ST.	
Dr. by <i>E.S.</i> Ch. by <i>Wray</i>	Approved 19.....
O. K. <i>[Signature]</i> Chief Draftsman Chief Engineer
Correct <i>[Signature]</i> Supl. of Buildings and Drafting	Scale 1"=40'-0"
Correct <i>[Signature]</i> Supl. of Track and Roadway	Date MARCH 28, 1935
Approved <i>[Signature]</i> 4-17-1935 Electrical Engineer	DRG. NO 2-P-554