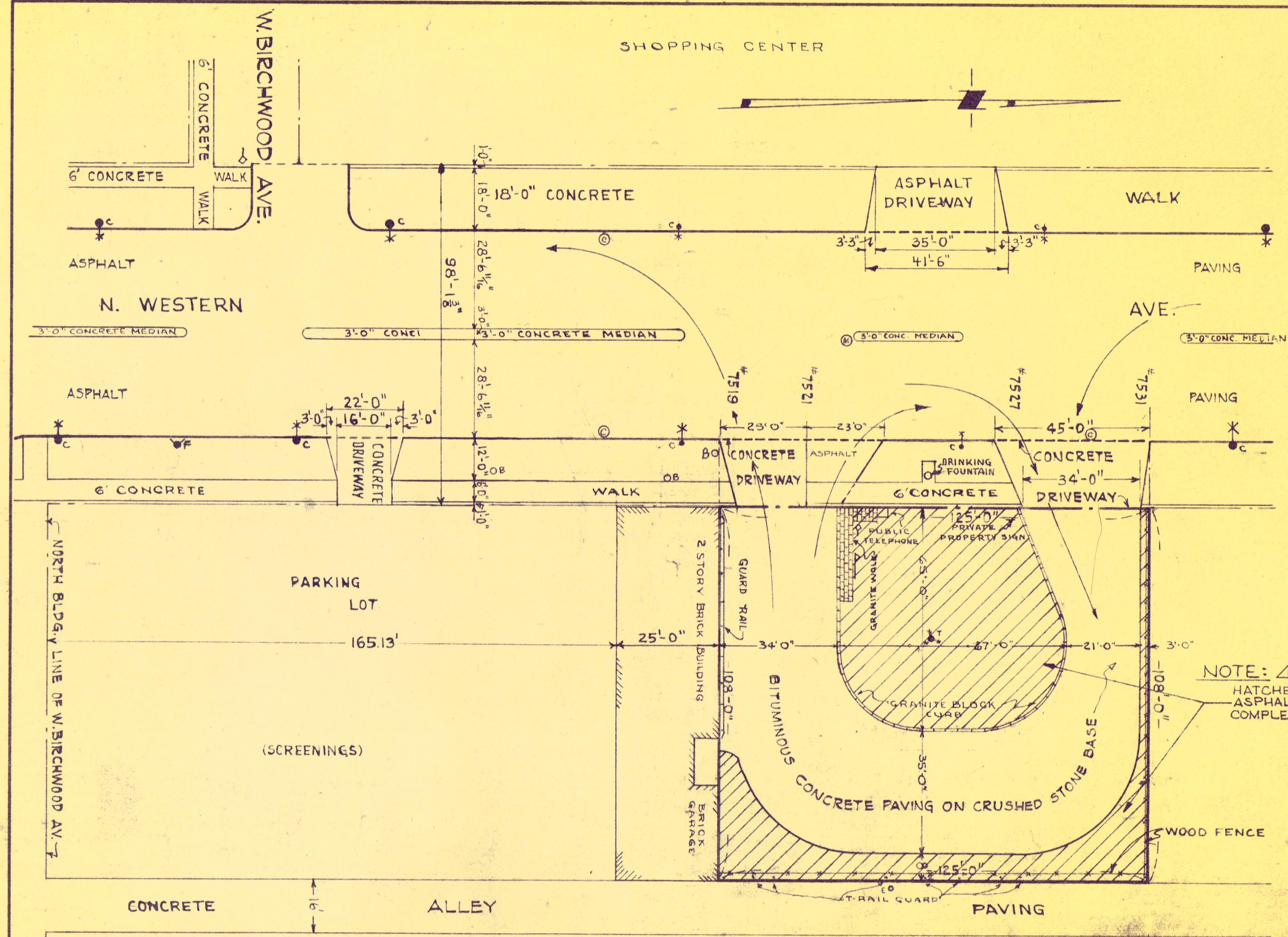


SHOPPING CENTER



NOTE: \triangle
 HATCHED AREA INDICATES
 ASPHALT SURFACING
 COMPLETED NOV. 1965

REV. 11-22-65 D.W.P.
 REVISED JUNE 9, 1964 R.C.M. C.C.R.
 REVISED FEB 24, 1960

CHICAGO TRANSIT AUTHORITY
 DEPARTMENT OF WAY AND STRUCTURES

PROPERTY
 GAS BUS TERMINAL
 N. WESTERN AV. NORTH OF W. BIRCHWOOD AV.

Dr. by F.E.K. Ch. by _____ Approved 7/19/50
 O.K. *[Signature]* Chief Draftsman
 Approved _____ Gen. Supt. of Way & Structures
 Approved _____ Scale 1" = 30'-0"
 Approved July 19, 1950 Date AUG. 16, 1950
[Signature] Supt. of Bldgs. & Drafting
 DRG. NO 2-P-31

-KEY-

- T ● INDICATES IRON TROLLEY POLE
- F ● " FIRE HYDRANT
- T ●* " C.T.A. POLE WITH LIGHT
- C ● " CITY POLE
- C ●* " " WITH LIGHT
- E O " EDISON POLE
- ⊙ INDICATES CATCH BASIN
- ◇ " STOP SIGN
- ▽ " C.T.A. BUS STOP SIGN
- ⊙ " MANHOLE
- ⊙ " BUFFALO BOX