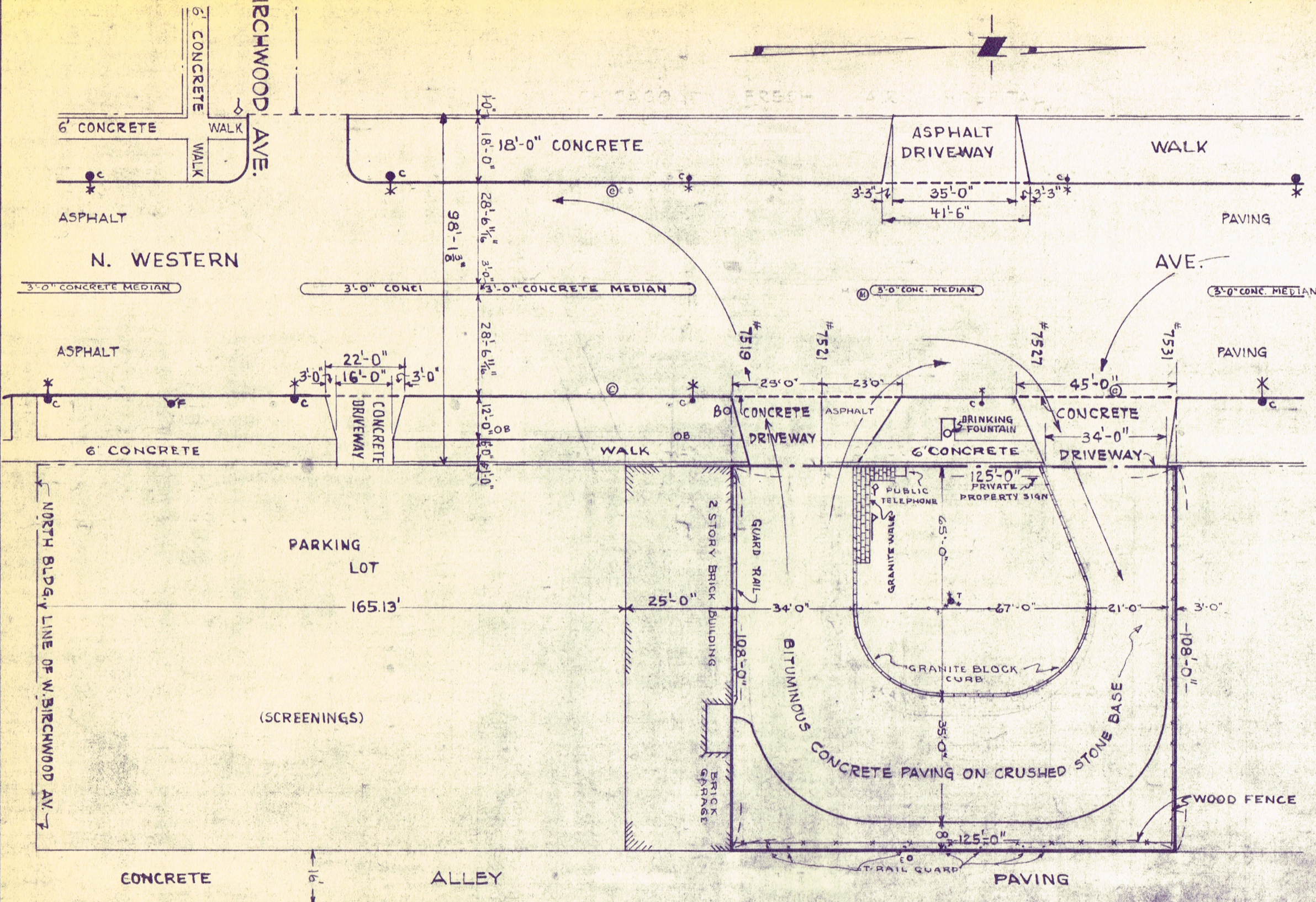


SHOPPING CENTER



MICROFILMED

REVISED JUNE 9, 1964 R.C.M. CCR
REVISED FEB 24, 1960

CHICAGO TRANSIT AUTHORITY
DEPARTMENT OF WAY AND STRUCTURES

PROPERTY
GAS BUS TERMINAL
N. WESTERN AV. NORTH OF W. BIRCHWOOD AV.

Dr. by F.E.K. Ch. by	Approved 7/19/50
O.K. J. S. [Signature]	[Signature]
Chief Draftsman	Gen. Supt. of Way & Structures
Approved	Scale 1" = 30'-0"
Approved July 19 1950	Date AUG. 16, 1950
[Signature]	DRG. No 2-P-31
Supt. of Bldgs. & Drafting	

-KEY-

- T ● INDICATES IRON TROLLEY POLE
- F ● " FIRE HYDRANT
- T ● * " C.T.A. POLE WITH LIGHT
- C ● " CITY POLE
- C ● * " " WITH LIGHT
- E ○ " EDISON POLE
- ⊙ INDICATES CATCH BASIN
- ◇ " STOP SIGN
- ▽ " C.T.A. BUS STOP SIGN
- ⊕ " MANHOLE
- ⊙ " BUFFALO BOX