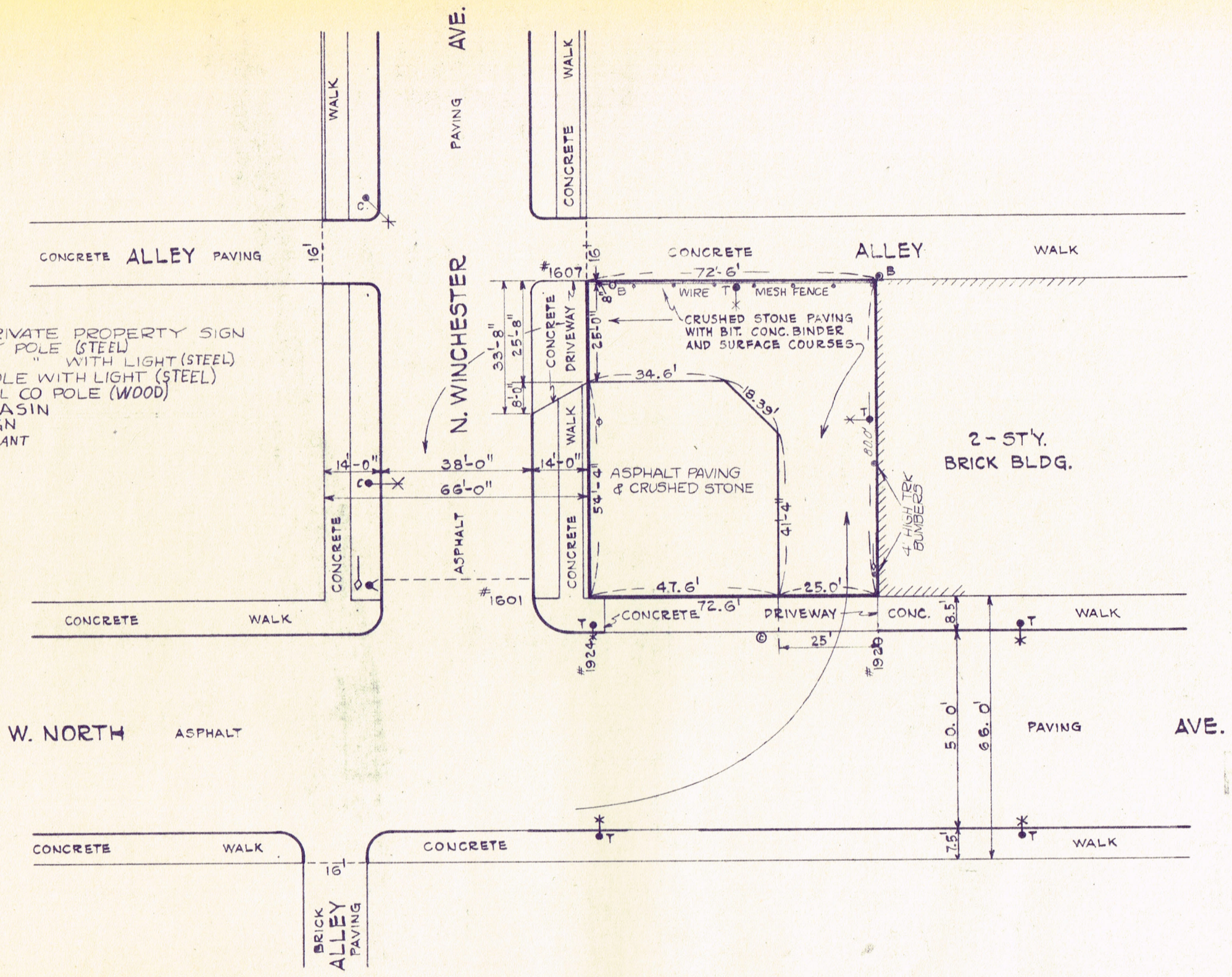


~KEY~
 C.T.A. PRIVATE PROPERTY SIGN
 TROLLEY POLE (STEEL) WITH LIGHT (STEEL)
 CITY POLE WITH LIGHT (STEEL)
 BELL TEL CO POLE (WOOD)
 CATCH BASIN
 STOP SIGN
 FIRE HYDRANT



UNPROTECTED

REVISED MARCH 2, 1965
 REVISED JUNE 26, 1964 R.C.M. CCR
 REVISED AS OF OCT. 27, 1958

CHICAGO TRANSIT AUTHORITY DEPARTMENT OF WAY AND STRUCTURES P	
PROPERTY TROLLEY BUS TERMINAL W. NORTH AVE. & N. WINCHESTER AVE.	
Dr. by F.E.K. Ch. by O.K.J. <i>Frankowski</i> Chief Draftsman	Approved <i>4/19/1960</i> <i>N. J. ...</i> Gen. Supt. of Way & Structures
Approved _____	Scale 1" = 30'-0"
Approved <i>Apr. 19 1950</i> <i>W. J. ...</i> Supt. of Bldgs. & Drafting	Date AUG. 16, 1950 DRG. No. 2-P-37