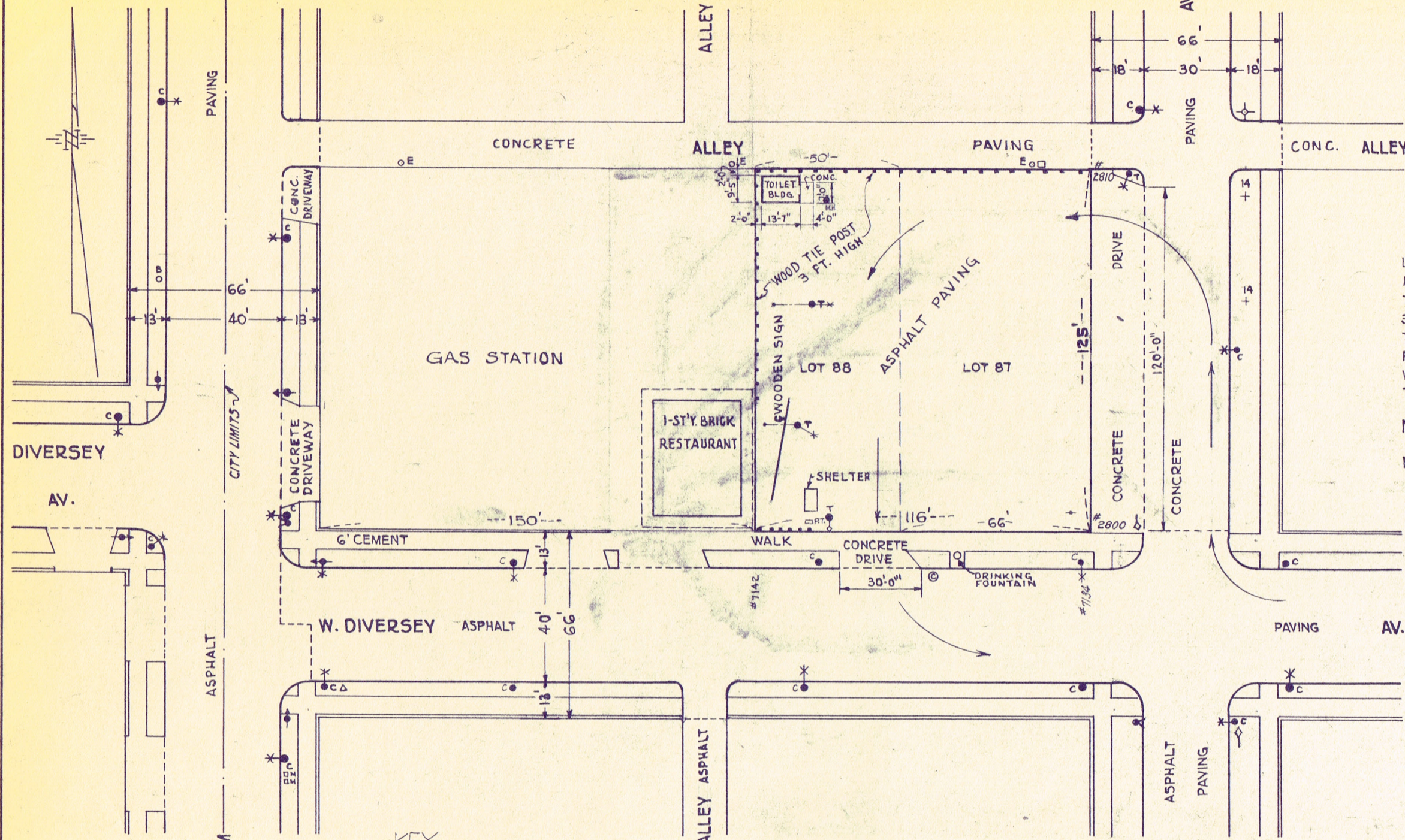


VILLAGE OF ELMWOOD PARK

CITY OF CHICAGO



LOTS 87 AND 88 IN JOHN J. RUTHERFORD'S 3RD ADDITION TO MONT CLARE, A SUBDIVISION OF THE WEST 1/2 OF THE NORTHWEST 1/4 OF SECTION 30, T.40 N., R.13, EAST OF THE 3RD P.M. (EXCEPT THE NORTH 40 ACRES THEREOF AND EXCEPT THAT PART OF THE NORTH 1/2 OF THE SOUTH 1/2 OF THE WEST 1/2 OF THE NORTHWEST 1/4, LYING EAST OF THE WEST 996 FEET THEREOF.)

NOTE: TITLE GUARANTEED BY C.T.&T. CO'S POLICY NO 2719950, DATED JULY 11, 1944.

- KEY-**
- PT □ PUBLIC TELEPHONE
 - T ● IRON TROLLEY POLE
 - T ● X " " " WITH LIGHT
 - C ● " CITY POLE
 - C ● X " " " WITH LIGHT
 - E ○ WOOD COM. ED. CO. POLE
 - E ○ X " " " WITH SWITCH BOX
 - B ○ " ILL. BELL TEL. POLE
 - B ○ X " " " " WITH LIGHT
 - FIRE HYDRANT
 - M □ U.S. MAIL BOX
 - TRAFFIC SIGNAL LIGHT
 - △ " " " CONTROL BOX
 - ◇ STOP SIGN
 - CTA PRIVATE PROPERTY SIGN
 - MH ● MANHOLE

© CATCH BASIN

ONE WAY
N. NEVA

MICROFILMED

REVISED JUNE 23, 1964 R.C.M.CCA
 REVISED NOV. 7, 1958
 REVISED JUN. 18, 1957
 REVISED NOV. 29, 1956
 REVISED JAN. 20, 1955
 REVISED JULY 18, 1950

CHICAGO TRANSIT AUTHORITY	
SURFACE DIVISION	
PROPERTY	
W. DIVERSEY AV. & N. NEVA AV.	
BUS TERMINAL	
Dr. by R.H. Koch Ch. by <i>MS</i>	Approved <i>9/29/1944</i>
O.K. <i>Michael Boray</i>	<i>H. D. Fleming</i>
Correct <i>M. Susal</i>	Chief Engineer
Correct <i>H. D. Fleming</i>	Scale 1" = 40'-0"
Approved <i>R. Ruppel</i>	Date JULY 19, 1944
Sup't. of Track & Roadway	DRG. NO 2-P-1229
Electrical Engineer	