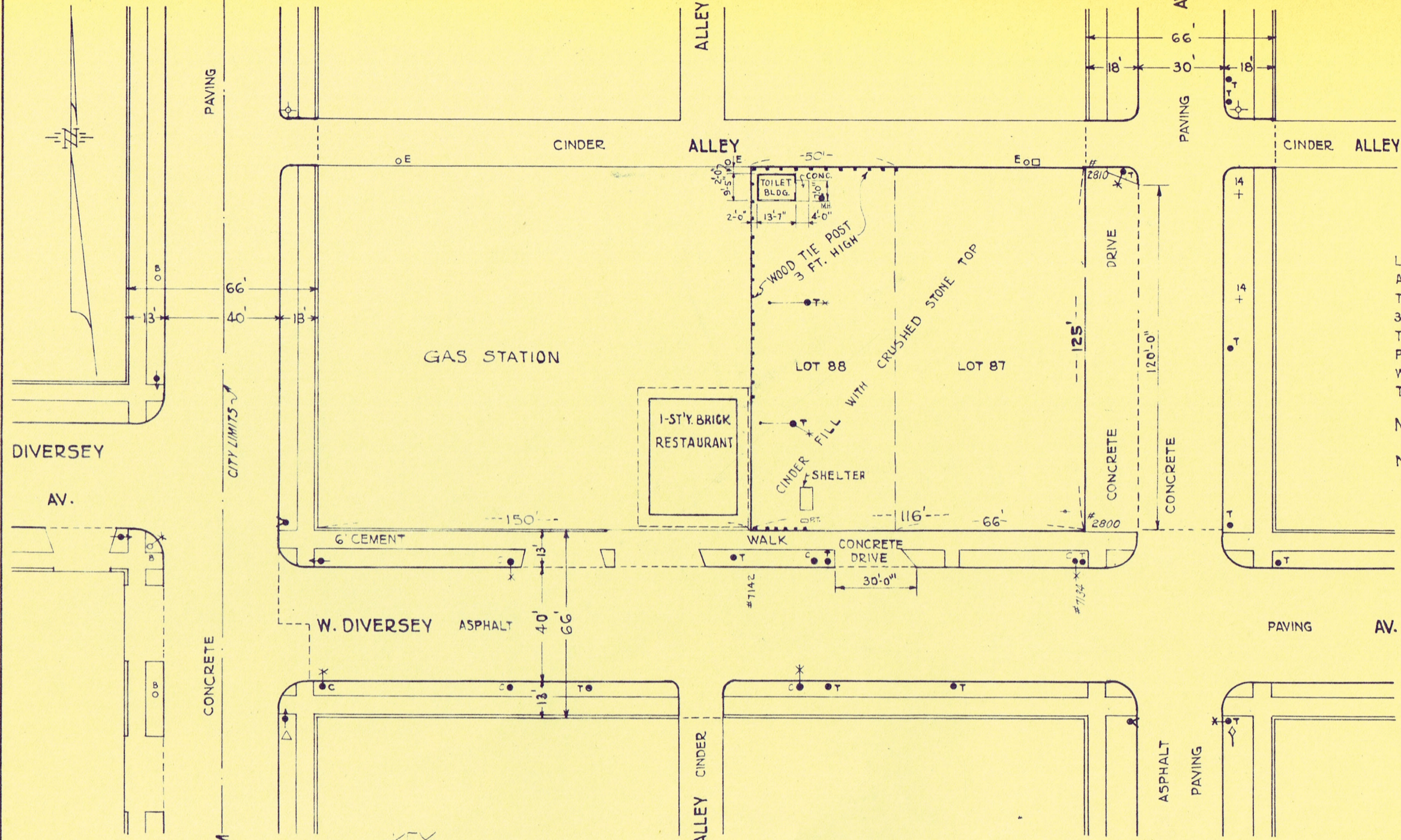


VILLAGE OF ELMWOOD PARK

CITY OF CHICAGO



LOTS 87 AND 88 IN JOHN J. RUTHERFORD'S 3<sup>RD</sup> ADDITION TO MONT CLARE, A SUBDIVISION OF THE WEST 1/2 OF THE NORTHWEST 1/4 OF SECTION 30, T. 40 N., R. 13, EAST OF THE 3<sup>RD</sup> P.M. (EXCEPT THE NORTH 40 ACRES THEREOF AND EXCEPT THAT PART OF THE NORTH 1/2 OF THE SOUTH 1/2 OF THE WEST 1/2 OF THE NORTHWEST 1/4, LYING EAST OF THE WEST 996 FEET THEREOF.)

NOTE:  
TITLE GUARANTEED BY C.T.&T. CO'S POLICY NO 2719950, DATED JULY 11, 1944.

- KEY**
- PT □ PUBLIC TELEPHONE
  - T ● IRON TROLLEY POLE
  - T ● WITH LIGHT
  - C ● CITY POLE
  - C ● WITH LIGHT
  - E ○ WOOD COM. ED. CO. POLE
  - E ○ WITH SWITCH BOX
  - B ○ ILL. BELL TEL. POLE
  - B ○ WITH LIGHT
  - F ● FIRE HYDRANT
  - L ● LAMP POST
  - TS ● TRAFFIC SIGNAL LIGHT
  - S ● " " " CONTROL BOX
  - ◇ STOP SIGN
  - ◇ CTA PRIVATE PROPERTY SIGN
  - MH ● MANHOLE

REVISED NOV. 7, 1958  
REV. JUN. 12, 1957  
REVISED NOV. 29, 1956  
REVISED JAN. 20, 1955  
REVISED JULY 18, 1950

CHICAGO TRANSIT AUTHORITY	
SURFACE DIVISION	
PROPERTY	
W. DIVERSEY AV. & N. NEVA AV.	
BUS TERMINAL	
Dr. by R.H. Koch Ch. by <i>M.K.</i>	Approved <i>9/29 1944</i>
O.K. <i>Michael Strong</i>	<i>H. D. Fleming</i>
Correct <i>M. J. ...</i>	Chief Engineer
Correct <i>...</i>	Scale 1" = 40'-0"
Approved <i>...</i>	Date JULY 19, 1944
Electrical Engineer	DRG. NO 2-P-1229